



Prospect Resources

Option to Acquire 12km Gold System - Moba Gold Project.

March – April 2016

ACN 124 354 329

For personal use only



Disclaimer & JORC Notice



For personal use only

The information contained in this presentation or subsequently provided to any recipient of this presentation whether orally or in writing by or on behalf of Prospect Resources Ltd (“Prospect Resources or the Company”) or its respective employees, agents or consultants (Information) is provided to the recipients on the terms and conditions set out in this notice. The purpose of this presentation is to provide recipients with information relating to Prospect Resources. This presentation has been prepared by Prospect Resources and each recipient must make his/her own independent assessment and investigation of Prospect Resources and its business and assets and should not rely on any statement or the adequacy and accuracy of any information.

Prospect Resources makes no representation or warranty (either expressed or implied) as to the accuracy, reliability or completeness of the Information. Prospect Resources and its directors, employees, agents and consultants shall have no liability (including liability to any person by reason of negligence or negligent misstatement) for any statements, opinions, information or matters (express or implied) arising out of, contained in or derived from, or for any omissions from the presentation, except liability under statute that can not be excluded.

This presentation contains references to certain intentions, expectations and plans of Prospect Resources. These intentions, expectations and plans may or may not be achieved. They are based on certain assumptions which may not be met or on which views may differ. The performance and operation of Prospect Resources may be influenced by a number of factors, many of which are outside the control of Prospect Resources. No representation or warranty, express or implied, is made by Prospect Resources or its respective directors, employees, officers, agents, consultants or advisers that intentions, expectations or plans will be achieved either totally or partially or that any particular rate of return will be achieved.

This presentation does not constitute in any way an offer or invitation to subscribe for securities in Prospect Resources pursuant to the Corporations Act 2001 (Cth).

The information in this presentation that relates to Exploration Results, Mineral Resources and Ore Reserves is based on information compiled by Mr Roger Tyler, a Competent Person who is a member of The Australasian Institute of Mining and Metallurgy and The South African Institute of Mining and Metallurgy. Mr Tyler is the Company’s Senior Geologist.

Mr Tyler has sufficient experience relevant to the style of mineralisation and type of deposit under consideration and to the activity he is undertaking to qualify as a Competent Person as defined in the 2012 Edition of the “Australasian Code for Reporting of Exploration Results, Mineral Resources and Ore Reserves”. Mr Tyler consents to the inclusion in the report of the matters based on his information in the form and context in which it appears.

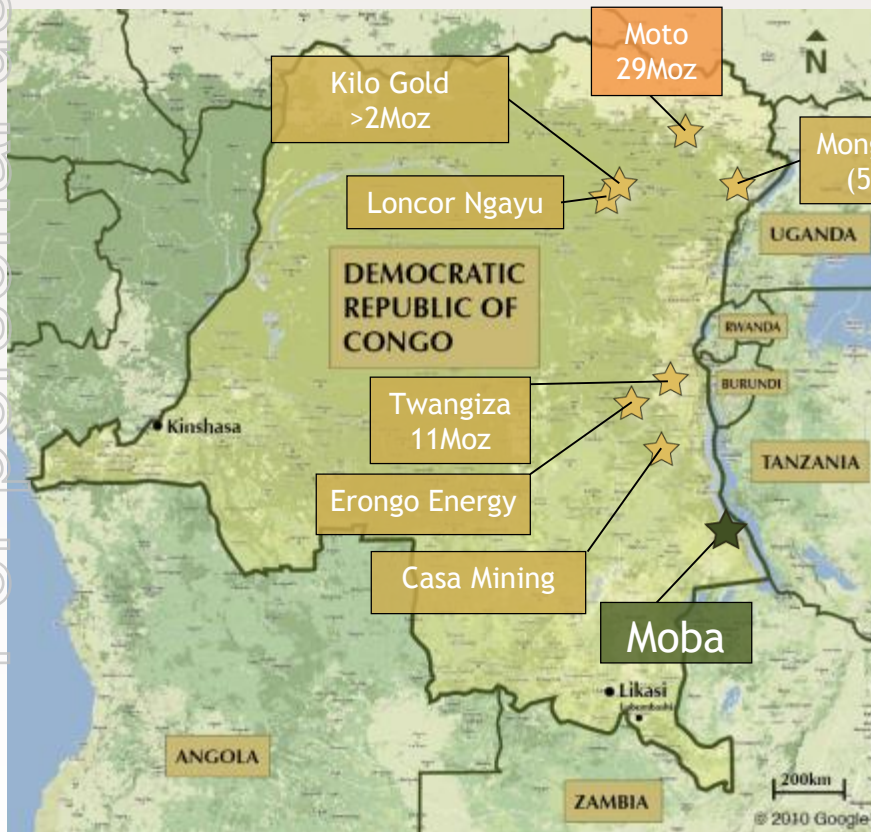
Moba Gold Project



DRC hosts multi million ounce gold deposits



Project location of some other gold exploration companies in DRC



- Located in the Tanganyika Province
- Two tenements covering 680km²
- Includes 3 colonial era mines (operating between 1939-1942 and 1953-1958) and several other gold deposits
- Moba district displays a significant 50km metal-zonation: Au - Ag - Cu- Pb - Zn

For personal use only

Recent Gold Exploration Results



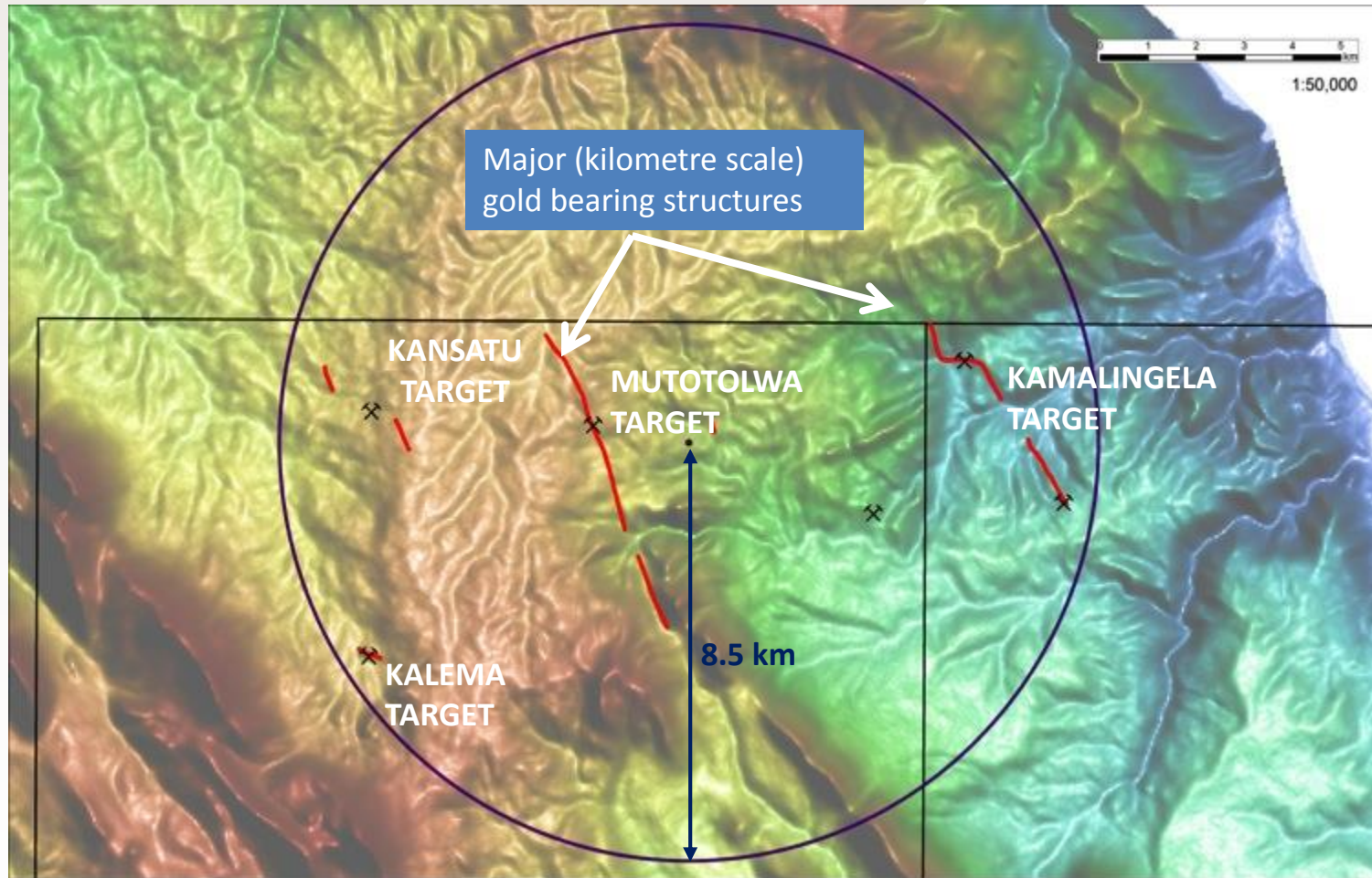
- ❑ Major gold bearing structures identified with >12km strike length
- ❑ Exploration through drilling, trenching, pitting, grab/channel sampling
- ❑ 4 main drill targets discovered to date:
 - **Mututolwa Target** - 1,276m drilling has tested 3km gold structure (incl. 400m strike @7g/t over 1m and 600m strike @ 6g/t over 1m).
 - **Kamalingela South** – >2.5km strike, active artisanal workings
 - **Kamalingela Nord Target** - 1.2km strike active artisanal workings
 - **Kansatu Target** - 1km gold target defined by surface sampling including: trenching over 200m strike at 6g/t over 1m and a further 200m strike of grab sampling 2-32g/t
 - **Mt Kalema Target** - 0.8km strike-length gold target. Channel sample on the northern wall reported 31m of 5g/t gold and a high grade halo to the old mine.

For personal use only

Moba Gold Project



Targeting kilometre-scale gold-bearing structures which have seen limited exploration or mining since 1958



For personal use only

Mutotolwa Target



Plan view of historic gold workings - along mineralized structure
>3km strike length

For personal use only

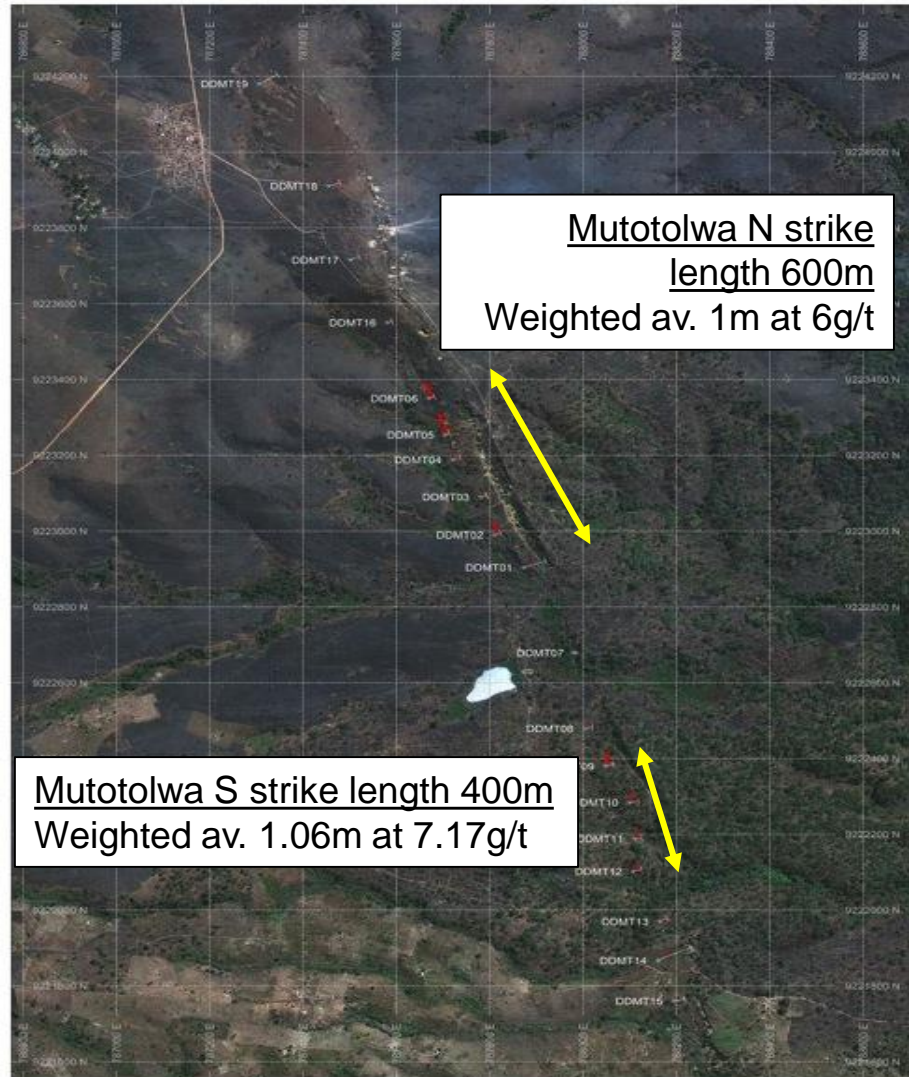


Image © 2011 GeoEye

1000m

Google earth

Muttolwa Target



Muttolwa Drilling

19 Diamond drill holes along 3km strike – all holes intersected the Muttolwa gold structure.

Total 2.3km strike at 4.5g/t over 1.33m

As a rule of thumb, these systems are half as deep as they are long. **Only the top 40m has been tested.**

Project Summary



- ❑ Ready to establish a small-scale gold mine, in parallel with resource definition
- ❑ Gold project located in Tanganyika Province, south eastern DRC.
- ❑ 70% interest in 2 Prospecting Rights covering 680km², potential to increase to increasing to 85%.
- ❑ Sufficient exploration expenditure carried out to convert Prospecting Rights to Exploitation Rights
- ❑ Kilometres of gold bearing structures.
- ❑ Mineralization is near surface (30m and less)
- ❑ First pass drilling and exploration work to define potential resources completed.
- ❑ Preliminary EIA completed, no fatal flaws noted.
- ❑ Historical test work reported 'near complete' gold recoveries from Mutotolwa.

For personal use only