

## MAIDEN DRILLING PROGRAM AT ILGARARI DELIVERS SOLID COPPER RESULTS

### HIGHLIGHTS

#### MAIN WORKINGS

- RC12IL-105, 9 m @ 2.4% Cu from 52m
- RC12IL-108, 19 m @ 1.5% Cu from 69m
- RC12IL-100, 12 m @ 1.39% Cu from 27m
- RC12IL-101 6 m @ 1.8% Cu from 79m
- RC12IL-102, 3 m @ 3.83% Cu from 115m
- RC12IL-103, 10 m @ 1.11% Cu from 58m
- RC12IL-107, 7 m @ 1.2% Cu from 100m

#### ALAC WORKINGS

- RC12IL-114, 9 m @ 1.1% Cu from 103m
  - and 6 m @ 1.3% Cu from 116m
- RC12IL-127, 22 m @ 1.4% Cu from 40m
- RC12IL-122, 25 m @ 0.57% Cu from 68m
  - and 9 m @ 1.7% Cu from 135m
- RC12IL-132, 6 m @ 1.28% Cu from 70 m

Kumarina Resources Limited is pleased to report assay results from the Company's maiden drilling program at its 100 % owned Ilgarari project.

The objective of the program was to test depth extensions to the existing mineralisation identified by previous drilling. The original program consisting of 40 holes was reduced to 24 holes (2696 metres) due to cyclone Lau which crossed over the area in late March.

Mr Sullivan said "The Company is encouraged by these promising results. The current depth of drilling has confirmed that the mineralisation is located within a deeply oxidised shear system that extends down to at least 130 metres. The results

demonstrate the potential upside to define a significant oxide resource within the weathered zone.

The mineralisation remains open at depth and on both strikes with current drilling having only tested approximately 1000 metres of the seven kilometre shear zone.

Potential for the discovery of primary copper mineralisation below the oxidised copper zone remains untested. Data from a recently completed IP ground survey, combined with these drill results will be integrated to establish the next phase of target drilling.”

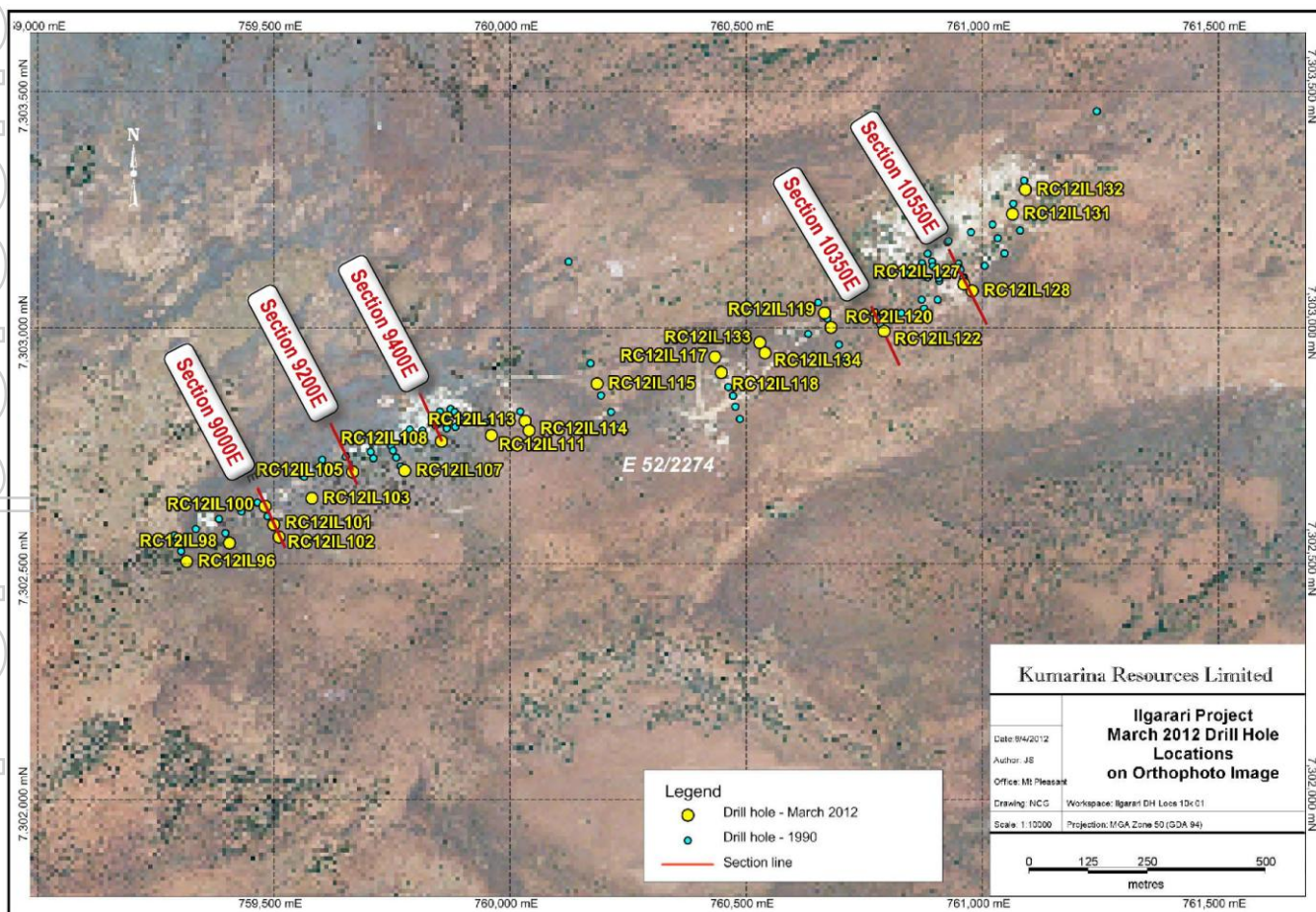
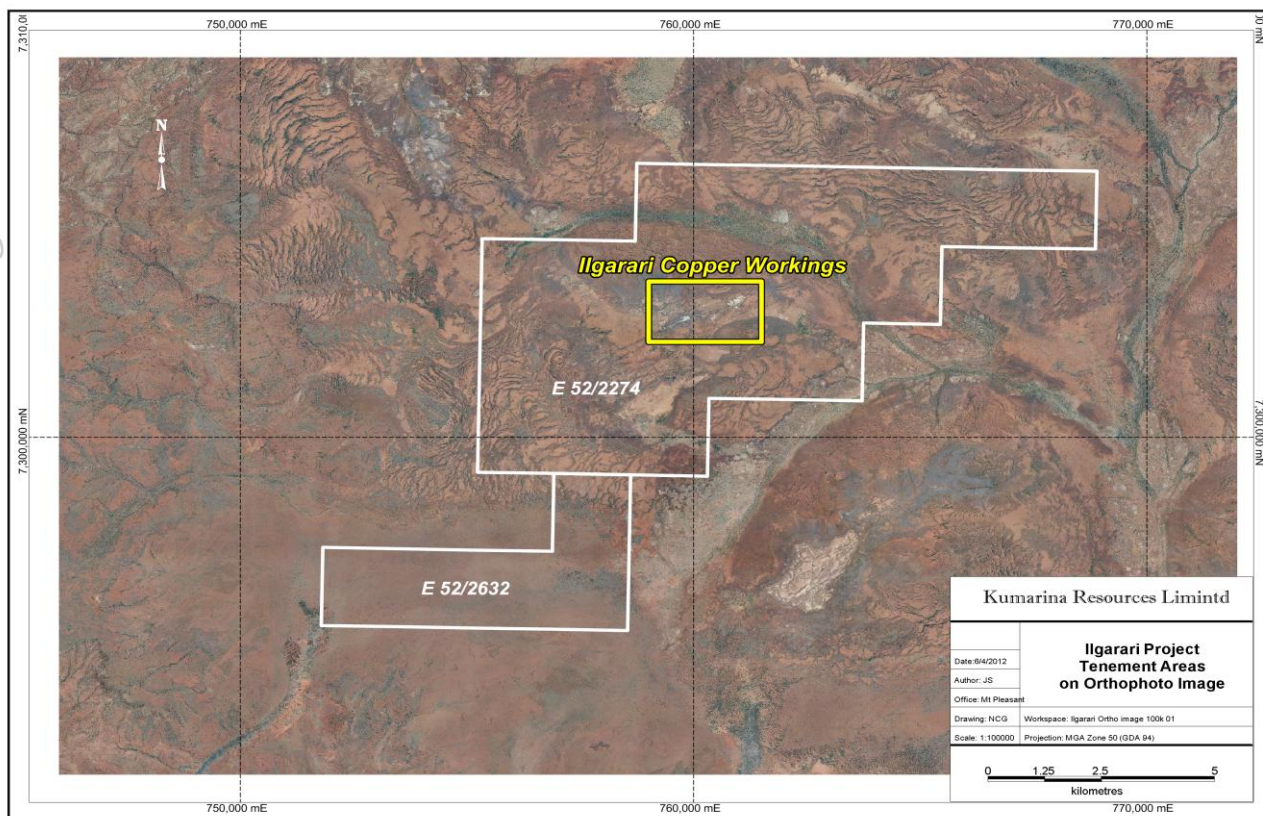
The following slides include hole layout and sections from the drilling program. The table of significant results are listed on Appendix 1.

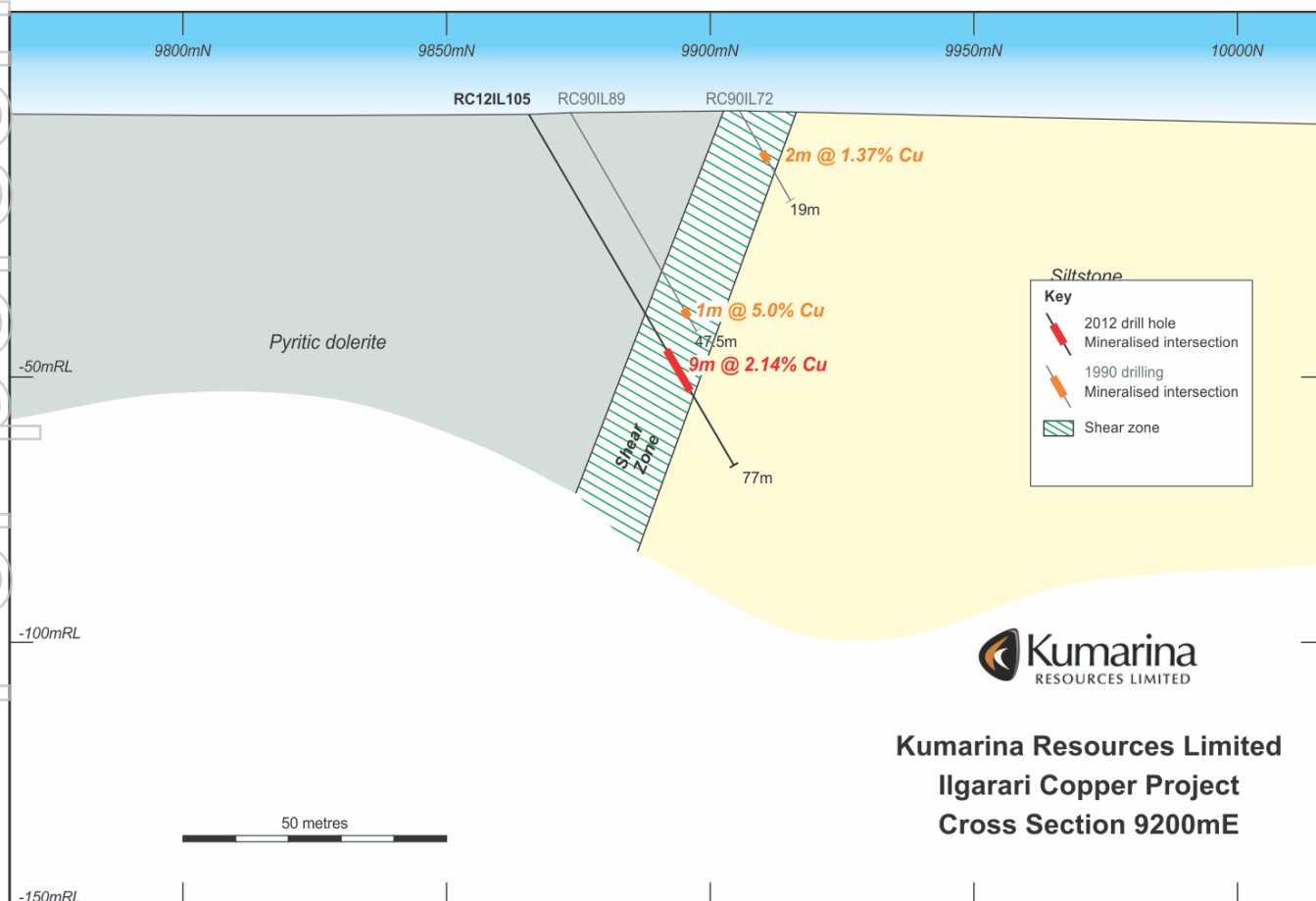
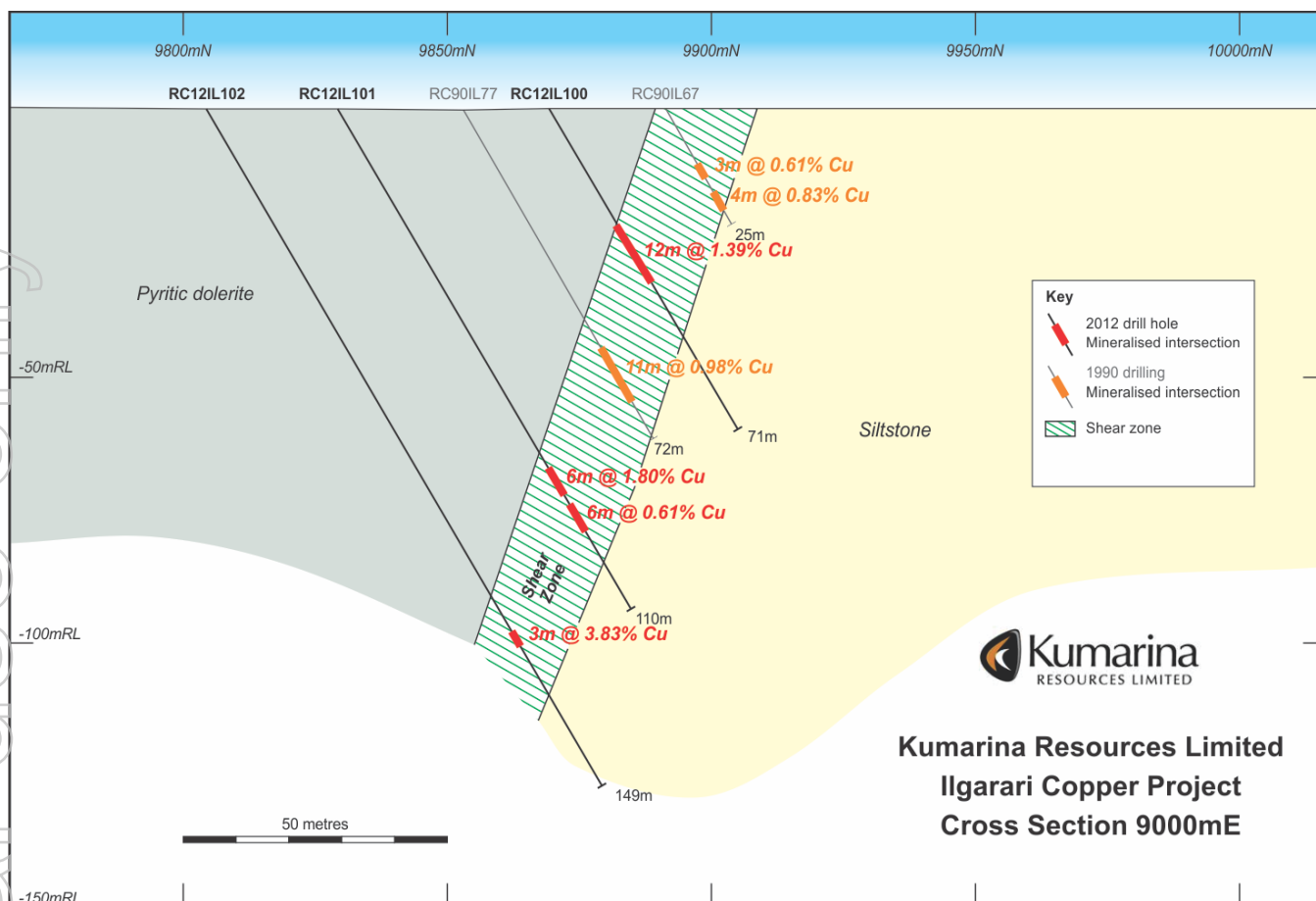
Yours sincerely,

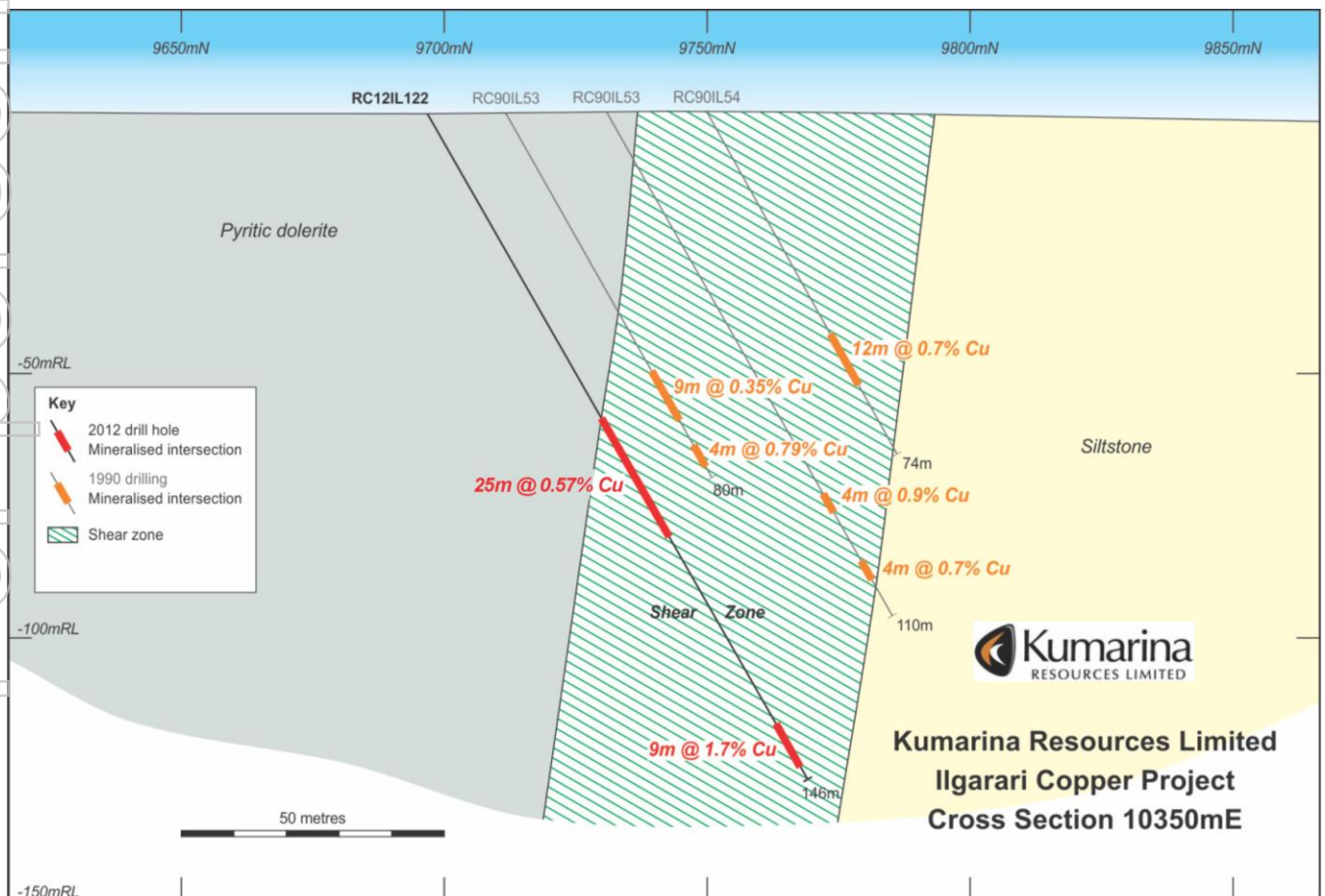
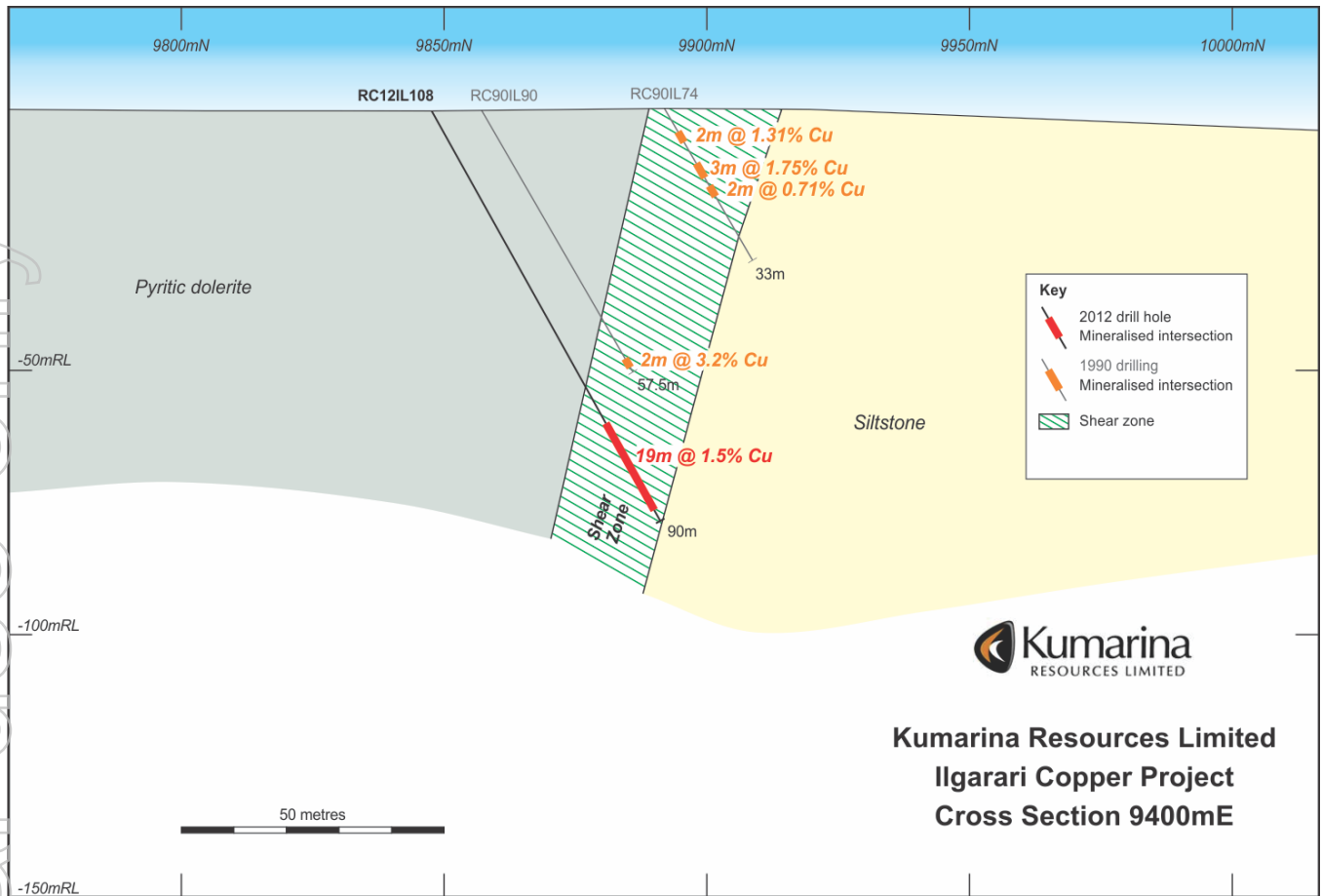


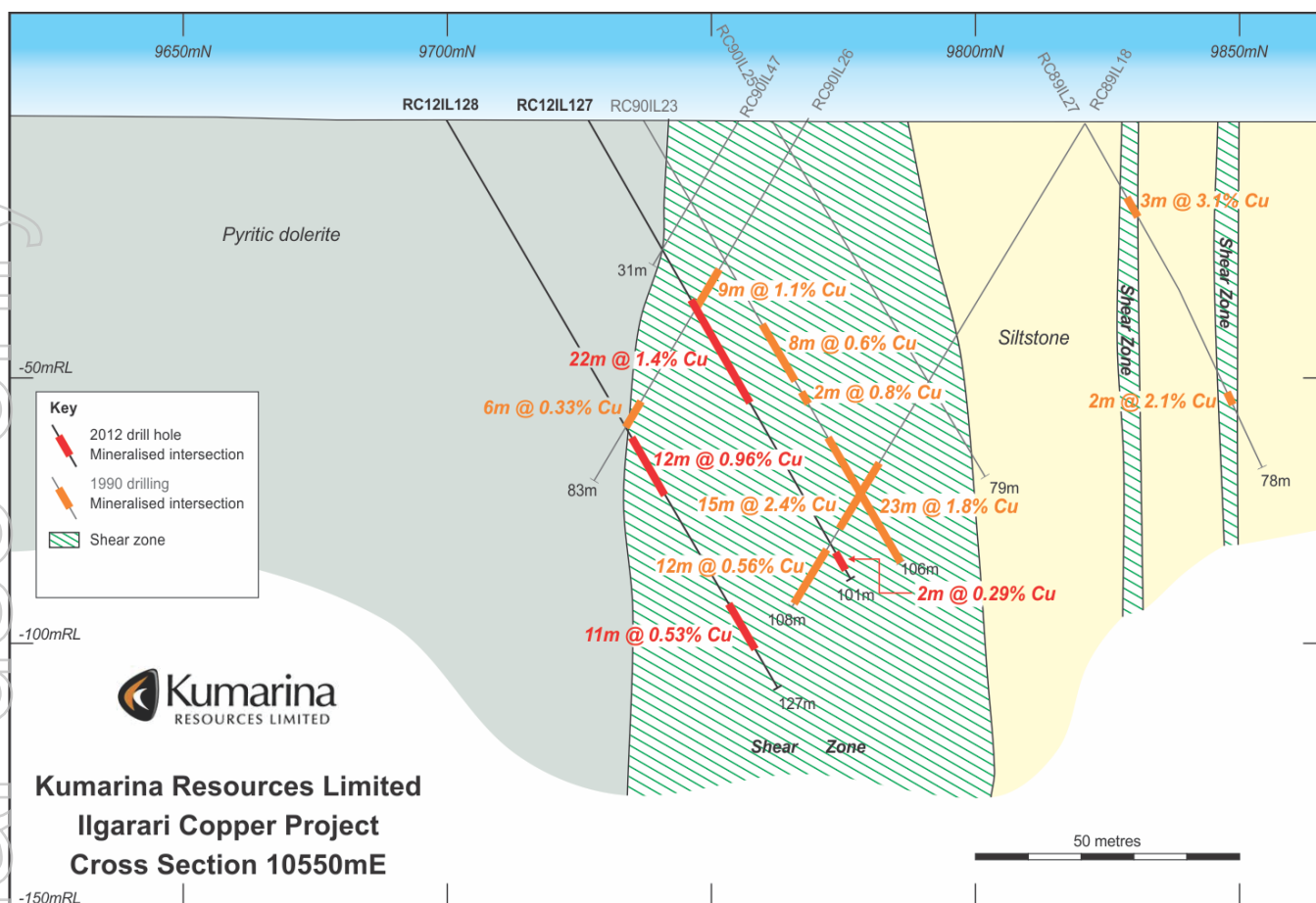
**Jamie Sullivan**  
**Managing Director**











### Competent Person Statement

The information in this report that relates to Exploration Results and Mineral Resources is based on information compiled by Mr Bryan Smith who is a member of The Australasian Institute of Mining and Metallurgy. Mr Smith is a Principal Consultant with Bryan Smith Geosciences. Mr Smith has sufficient experience, which is relevant to the style of mineralization and type of deposit under consideration and to the activity which he is undertaking to qualify as a Competent Person as defined in the 2004 Edition of the "Australasian Code for Reporting of Mineral Resources and Ore Reserves. Mr Smith consents to the inclusion in the report of the matters based on information provided in the form and context in which it appears.



**APPENDIX 1 DRILLING RESULTS ILGARARI PROJECT MARCH 2012**

Hole ID	Local		GDA 94		Depth		Intersection metres	Cu%*
	Easting	Northing	Easting	Northing	From	To		
RC12IL-96	8800	9835	759315	7302509	60	62	2	0.37
RC12IL-98	8900	9835	759406	7302548	66	70	4	0.26
RC12IL-100	9000	9870	759481	7302626	27	39	12	1.39
RC12IL-101	9000	9830	759500	7302587	79	85	6	1.8
					89	93	6	0.61
RC12IL-102	9000	9805	759511	7302561	115	118	3	3.83
RC12IL-103	9100	9850	759580	7302643	58	68	10	1.11
RC12IL-105	9200	9865	759667	7302699	52	61	9	2.14
RC12IL-107	9300	9820	759777	7302701	100	107	7	1.2
RC12IL-108	9400	9848	759855	7302763	69	88	19	1.5
RC12IL-111	9500	9820	759961	7302776	115	124	9	0.57
					128	136	8	0.48
RC12IL-113	9577	9825	760032	7302806	59	77	18	0.45
					85	89	4	0.3
RC12IL114	9577	9800	760040	7302786	103	112	9	1.1
					116	122	6	1.3
					139	143	4	0.46
RC12IL-117	10000	9790	760434	7302942	26	28	2	0.22
					86	90	4	0.34
					90	92	2	0.47
RC12IL-118	10000	9755	760448	7302909	68	76	8	0.29
					80	88	8	0.33
					108	110	2	0.23
RC12IL119	10250	9785	760666	7303036	5	7	2	0.25
					17	22	5	0.31
RC12IL120	10250	9749	760680	7303005	33	39	6	1.5
					80	82	2	0.5
RC12IL122	10350	9710	760792	7302997	68	93	25	0.57
					135	144	9	1.7
RC12IL127	10550	9725	760961	7303097	40	62	22	1.4
					98	100	2	0.29
RC12IL128	10550	9700	760979	7303082	71	83	12	0.96
					107	118	11	0.53
RC12IL132	10750	9850	761091	7303297	70	76	6	1.28
RC12IL133	10100	9780	760529	7302972	13	23	10	0.22
					66	68	2	0.25

\* Intersections are based on grades greater than or equal to 0.2% Cu over a minimum down hole length of 2 metres and a maximum internal dilution of 2 metres. All intersections are down hole lengths.

**About Kumarina Resources Ltd**



*Kumarina is an Australian resource company with two highly prospective copper/gold projects located in Western Australia. The Company listed on the ASX in December 2011 after raising \$10.3 through an IPO.*

*The Ilgarari Project is located 120kms south of Newman in the South Pilbara and the Murrin Murrin Project is located 50 kms east of Leonora in the NE Goldfields. Both of the Company's 100% owned projects have substantial historic Copper/Gold production records. Previous underground and open pit workings provide the Company with advanced drill targets and the opportunity to fast track targeted exploration focused on establishing economic resources.*

*The board and management of Kumarina have significant corporate - financial experience and have been involved in exploring, developing and operating resource projects in Australia over the past 20 years.*

